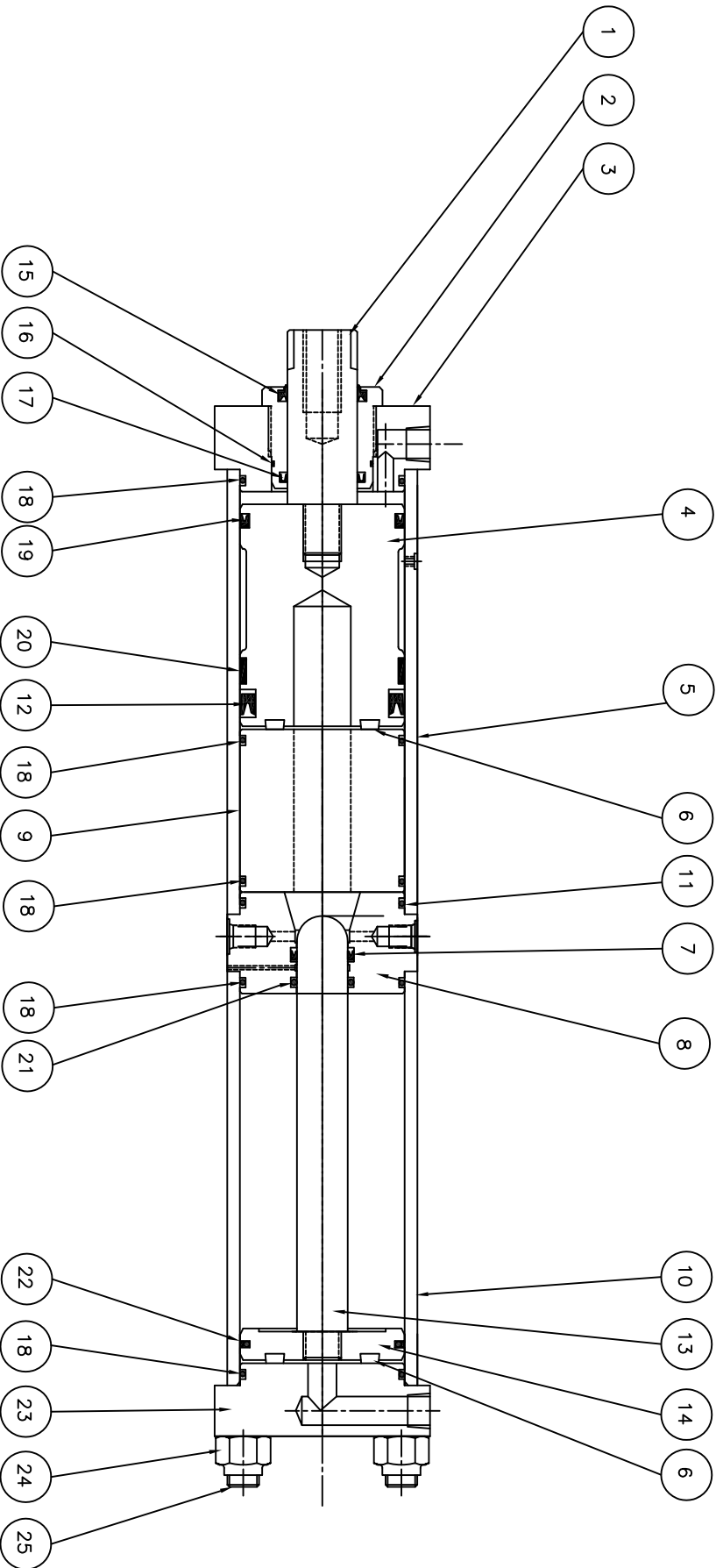


HYPERCVL TONNAGE	THE ROD TORQUE FOOT POUNDS	THE ROD THREAD
1-TON	22 FT-LBS	3/8"-24
2-TON	22 FT-LBS	3/8"-24
4-TON	80 FT-LBS	5/8"-18
8-TON	80 FT-LBS	5/8"-18
10/15/20-TON	120 FT-LBS	3/4"-16
30/40-TON	400 FT-LBS	1.00"-14
50/60-TON	650 FT-LBS	1.25"-12
75/90/100-TON	750 FT-LBS	1.25"-12
200-TON	1000 FT-LBS	1.25"-12

ITEM NO.	AMT.	DESCRIPTION	ITEM NO.	AMT.	DESCRIPTION	ITEM NO.	AMT.	DESCRIPTION
1	1	HZ**01-* / WORK ROD	11	1	"O-RING" #568-***-90	21	1	"O-RING" #NBR-***
2	1	E**03 / ROD BEARING CARTRIDGE	12	1	"BLUE" PISTON SEAL	22	1	THE PISTON SEAL W/ O-RING
3	1	E**04 / RECTANGULAR WORK HEAD	13	1	HZ**15-*/** / H.P. ROD	23	1	E**17 / CAP
4	1	HZ**06-* / WORK PISTON	14	1	E**16 / HIGH PRESSURE PISTON	24	4	**** HEX LOCK NUT, GRADE 8
5	1	E**05-* / WORK SECTION TUBE	15	1	ROD WIPER	25	4	E**18-***/** / TIE RODS
6	2	BP-** / PISTON BUMPER	16	1	"O-RING" #568-***-70	26		
7	1	"BLUE" U-CUP ROD SEAL	17	1	U-CUP	27		
8	1	HZ**10 / VALVE BLOCK	18	5	"O-RING" #568-***-70	28		
9	1	HZ**55-* / SPACER	19	1	"BLUE" U-CUP PISTON SEAL	29		
10	1	HZ**14-** / H.P. SECTION TUBE	20	1	WEAR BAND	30		



**HYPERCVL** Arises Engineering Company, Inc.  
 130 Ames Drive, Dundee, MI 48131  
 PH. (734) 563-8853 FAX. (734) 563-8944

TOLENANCE UNLESS OTHERWISE SPECIFIED  
 TWO PLACE DECIMALS, .015  
 THREE PLACE DECIMALS, .005

ANGLES 30°

BREAK ALL UNNECESSARY SHARP CORNERS

DRAWN MAB DATE 3/31/16 DWG. NO. HZ-\*\*-COMPONENT CALLOUT

CHECKED SCALE

DESCRIPTION "HZ" SERIES HYPERCVL CYLINDER  
 MNT'L. SEE BILL OF MATERIAL